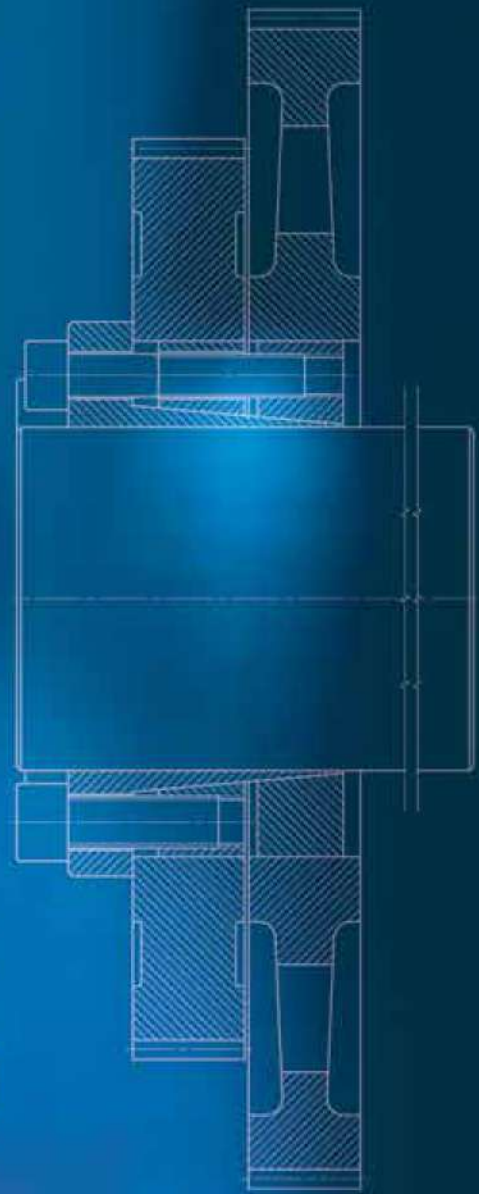


LOCKING ASSEMBLIES



we connect **e**motions

Shrink disc ■ Mini Series ■ Rigid Couplings

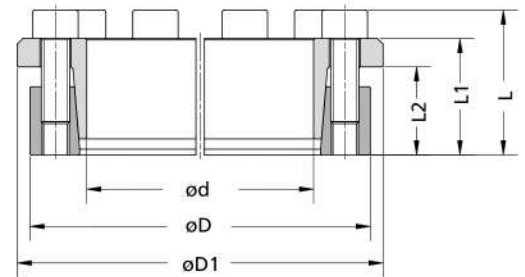


www.mav.it

MAV 1061

Standard Series

DIMENSIONS							SCREWS		PERFORMANCES				WEIGHT kg
d mm	x	D mm	D1 mm	L2 mm	L1 mm	L mm	size	Ma Nm	Mt Nm	Fax kN	Ps MPa	Ph MPa	
14	x	28	32,0	17,0	20,5	24,5	M 4	5	68	10	132	66	0,07
15	x	28	32,0	17,0	20,5	24,5	M 4	5	73	10	123	66	0,06
16	x	32	37,0	18,0	21,5	25,5	M 4	5	78	10	115	58	0,09
18	x	47	52,0	22,5	28,5	34,5	M 6	17	250	28	241	92	0,30
19	x	47	52,0	22,5	28,5	34,5	M 6	17	260	28	229	92	0,30
20	x	47	52,0	22,5	28,5	34,5	M 6	17	280	28	217	92	0,30
22	x	47	52,0	22,5	28,5	34,5	M 6	17	310	28	197	92	0,30
24	x	50	56,5	22,5	28,5	34,5	M 6	17	400	33	217	104	0,30
25	x	50	56,5	22,5	28,5	34,5	M 6	17	420	33	209	104	0,30
28	x	55	61,5	22,5	28,5	34,5	M 6	17	470	33	186	95	0,40
30	x	55	61,5	22,5	28,5	34,5	M 6	17	500	33	174	95	0,30
32	x	60	66,5	22,5	28,5	34,5	M 6	17	710	45	217	116	0,40
35	x	60	66,5	22,5	28,5	34,5	M 6	17	780	45	199	116	0,40
38	x	65	71,5	22,5	28,5	34,5	M 6	17	850	45	183	107	0,50
40	x	65	71,5	22,5	28,5	34,5	M 6	17	890	45	174	107	0,40
42	x	75	83,5	26,5	34,5	42,5	M 8	41	1'510	72	227	127	0,80
45	x	75	83,5	26,5	34,5	42,5	M 8	41	1'620	72	212	127	0,70
48	x	80	88,5	26,5	34,5	42,5	M 8	41	1'730	72	199	119	0,80
50	x	80	88,5	26,5	34,5	42,5	M 8	41	1'800	72	191	119	0,80
55	x	85	93,5	26,5	34,5	42,5	M 8	41	2'260	82	198	128	0,80
60	x	90	98,0	26,5	34,5	42,5	M 8	41	2'470	82	182	121	0,90
65	x	95	102,0	26,5	34,5	42,5	M 8	41	3'010	93	189	129	0,90
70	x	110	119,0	30,5	40,5	50,5	M 10	83	4'730	135	213	136	1,70
75	x	115	124,0	30,5	40,5	50,5	M 10	83	5'070	135	199	130	1,80
80	x	120	129,0	30,5	40,5	50,5	M 10	83	5'410	135	187	124	1,90
85	x	125	134,0	30,5	40,5	50,5	M 10	83	6'460	152	198	134	2,00
90	x	130	139,0	30,5	40,5	50,5	M 10	83	6'840	152	187	129	2,00
95	x	135	144,0	30,5	40,5	50,5	M 10	83	8'020	169	197	138	2,10
100	x	145	154,0	33,0	45,0	57,0	M 12	145	10'100	202	206	142	2,80
110	x	155	164,0	33,0	45,0	57,0	M 12	145	11'100	202	187	133	3,00
120	x	165	174,0	33,0	45,0	57,0	M 12	145	13'600	227	193	140	3,30
130	x	180	189,0	41,0	55,0	69,0	M 14	230	19'800	305	183	132	4,70
140	x	190	199,0	41,0	55,0	69,0	M 14	230	21'400	305	170	125	5,20
150	x	200	209,0	41,0	55,0	69,0	M 14	230	25'400	339	176	132	5,50
160	x	210	219,0	41,0	55,0	69,0	M 14	230	29'900	373	182	139	5,80
170	x	225	234,0	51,0	65,0	79,0	M 14	230	34'600	407	144	109	8,10
180	x	235	244,0	51,0	65,0	79,0	M 14	230	36'600	407	136	104	8,50
190	x	250	259,0	51,0	65,0	79,0	M 14	230	48'300	509	161	123	9,80
200	x	260	269,0	51,0	65,0	79,0	M 14	230	50'900	509	153	118	10,20
220	x	285	292,0	57,0	73,0	89,0	M 16	355	61'300	558	134	104	13,70
240	x	305	314,0	57,0	73,0	89,0	M 16	355	83'600	697	154	121	14,80
260	x	325	334,0	57,0	73,0	89,0	M 16	355	109'000	836	171	137	15,80
280	x	355	364,0	67,0	85,0	103,0	M 18	485	126'000	897	142	112	23,40
300	x	375	384,0	67,0	85,0	103,0	M 18	485	151'000	1'010	149	119	24,80
320	x	405	414,0	82,0	102,0	122,0	M 20	690	209'000	1'310	146	116	35,00
340	x	425	434,0	82,0	102,0	122,0	M 20	690	259'000	1'530	161	129	37,00
360	x	455	464,0	94,0	116,0	138,0	M 22	930	292'000	1'620	139	110	50,50
380	x	475	484,0	94,0	116,0	138,0	M 22	930	359'000	1'890	153	123	53,10
400	x	495	504,0	94,0	116,0	138,0	M 22	930	378'000	1'890	146	118	56,50



Example of order: MAV 1061 50 x 80

Features

- Medium capacity
- Self-centering, self-locking
- Fixed axial hub position during tightening (MAV 1061 only)
- Single taper design
- Tolerances: shaft h8; hub bore H8
- Surface finish of shaft and hub bore $0.8 \mu\text{m} \leq Ra \leq 3.2 \mu\text{m}$

Application examples

Simultaneous connection of chain sprocket and conveyor pulley

