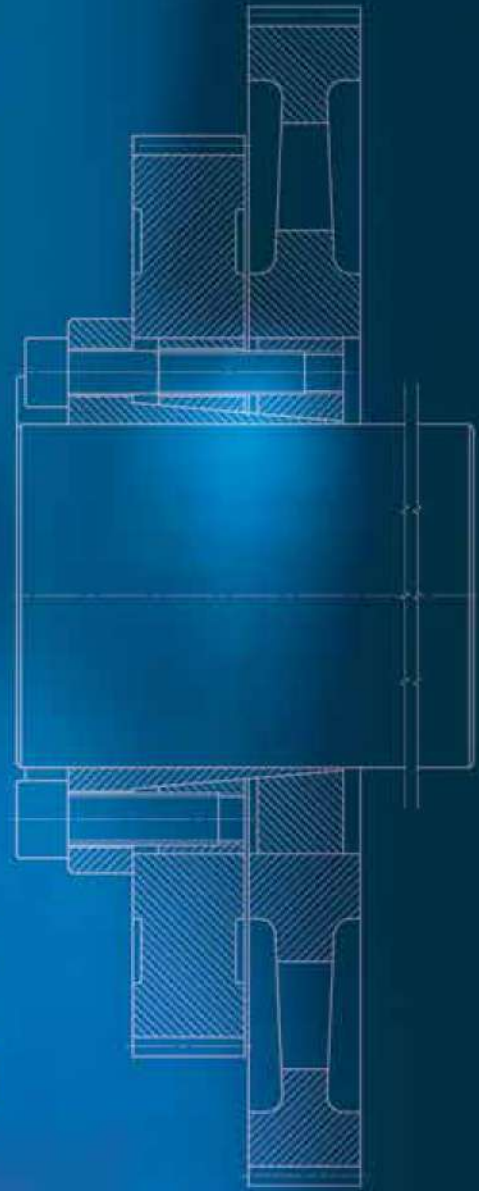


LOCKING ASSEMBLIES

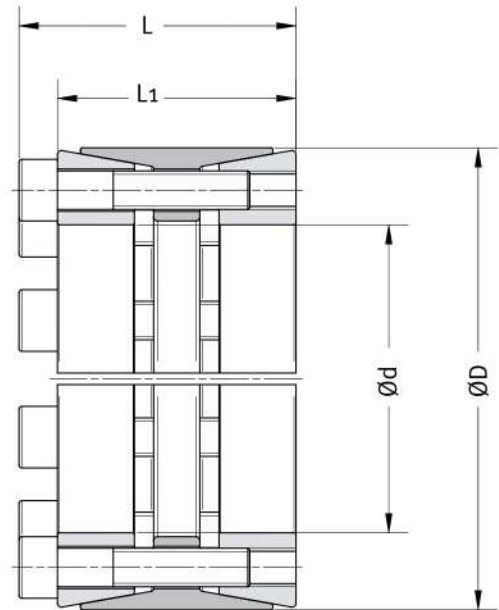


we connect **e**motions

Shrink disc ■ Mini Series ■ Rigid Couplings



www.mav.it



Example of order: MAV 1008 100 x 145

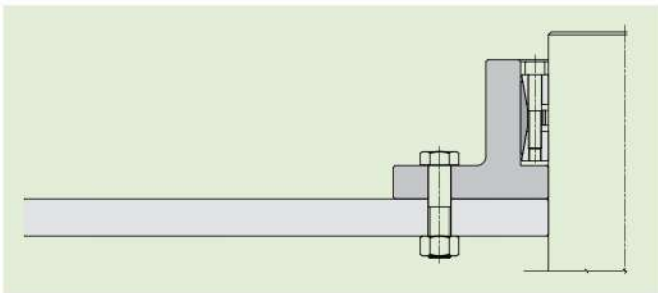
Features

- High capacity
- Self-centering, self-locking
- Two thrust rings with single taper design
- Tolerances: shaft h11; hub bore H11
- Surface finish of shaft and hub bore $0.8 \mu\text{m} \leq \text{Ra} \leq 3.2 \mu\text{m}$

Composition

- Slotted front thrust ring, with integrated push-off holes
- Slotted rear thrust ring
- Slotted outer ring, with integrated push-off threads
- Set of socket head cap screws, grade 12.9

Application examples



Brake disc connected with MAV 1008 and flange

Components



DIMENSIONI					SCREWS		PERFORMANCES				WEIGHT kg
d mm	x	D mm	L1 mm	L mm	size	Ma Nm	Mt Nm	Fax kN	Ps MPa	Ph MPa	
70	x	110	62	72	M 10	83	7'300	208	197	125	2,3
75	x	115	62	72	M 10	83	7'800	208	184	120	2,4
80	x	120	62	72	M 10	83	10'400	260	216	144	2,5
85	x	125	62	72	M 10	83	11'100	260	203	138	2,6
90	x	130	62	72	M 10	83	12'900	286	211	146	2,7
95	x	135	62	72	M 10	83	13'600	286	200	141	2,9
100	x	145	72	84	M 12	145	19'400	388	215	148	4,1
110	x	155	72	84	M 12	145	21'400	388	195	138	4,3
120	x	165	72	84	M 12	145	25'600	427	197	143	4,6
130	x	180	81	93	M 12	145	35'300	544	205	148	6,4
140	x	190	82	94	M 12	145	40'800	583	204	151	6,7
150	x	200	82	94	M 12	145	43'700	583	191	143	7,2
160	x	210	82	94	M 12	145	49'700	621	191	145	7,6
170	x	225	93	107	M 14	230	67'500	795	194	146	10,5
180	x	235	93	107	M 14	230	71'500	795	183	140	10,9
190	x	250	105	119	M 14	230	80'500	848	156	118	14,2
200	x	260	105	119	M 14	230	105'000	1'047	183	141	14,6
220	x	285	111	127	M 16	355	119'000	1'082	159	123	18,9
240	x	305	111	127	M 16	355	173'000	1'442	194	153	20,0
260	x	325	111	127	M 16	355	197'000	1'514	188	151	21,5
280	x	355	110	130	M 20	690	237'000	1'695	211	167	27,0
300	x	375	111	131	M 20	690	254'000	1'695	197	158	29,7
320	x	405	136	156	M 20	690	362'000	2'260	195	154	43,5
340	x	425	136	156	M 20	690	384'000	2'260	184	147	46,5
360	x	455	160	182	M 22	930	499'000	2'771	170	135	66,0
380	x	475	160	182	M 22	930	526'000	2'771	161	129	68,5
400	x	495	160	182	M 22	930	610'000	3'048	168	136	72,0
420	x	515	160	182	M 22	930	698'000	3'325	175	143	74,5
440	x	535	160	182	M 22	930	731'000	3'325	167	137	78,0
460	x	555	160	182	M 22	930	765'000	3'325	160	132	82,0
480	x	575	160	182	M 22	930	831'000	3'463	159	133	84,0
500	x	595	160	182	M 22	930	866'000	3'463	153	129	88,0
520	x	615	160	182	M 22	930	1'008'000	3'879	165	139	91,0
540	x	635	160	182	M 22	930	1'047'000	3'879	159	135	94,0
560	x	655	160	182	M 22	930	1'164'000	4'156	164	140	97,0
580	x	675	160	182	M 22	930	1'205'000	4'156	158	136	100,0
600	x	695	160	182	M 22	930	1'247'000	4'156	153	132	103,0

Code:

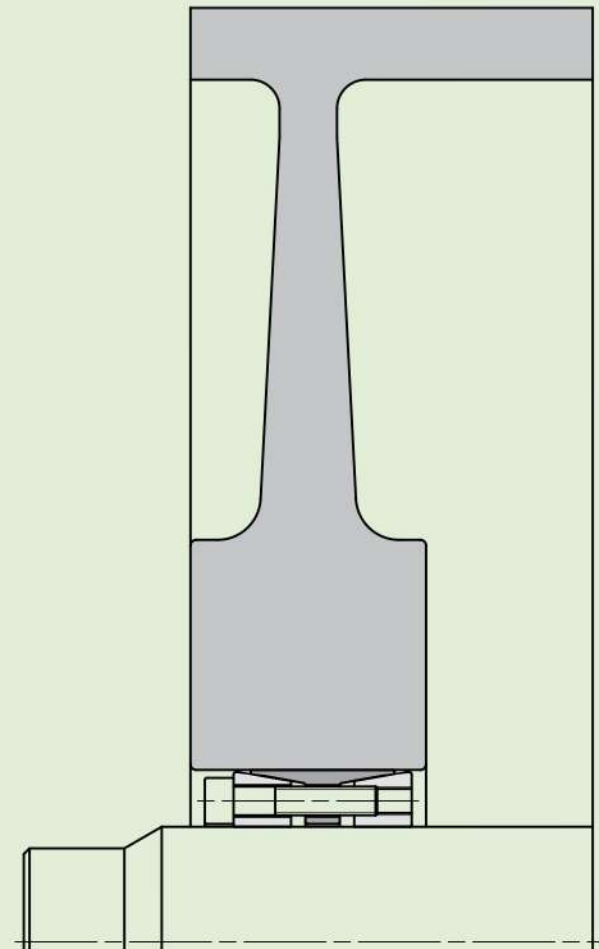
Ma: screws tightening torque

Mt: transmissible torque with Fax=0 kN

Fax: transmissible axial load with Mt=0 Nm

Ps: contact pressure on shaft

Ph: contact pressure in hub bore



Connection of end disc of conveyor pulley for mining industry. The MAV 1008 allows an optimized "T" shaped design of the end disc, which is lighter and cheaper and compensates higher bending moment generated by the tension of the belt.